

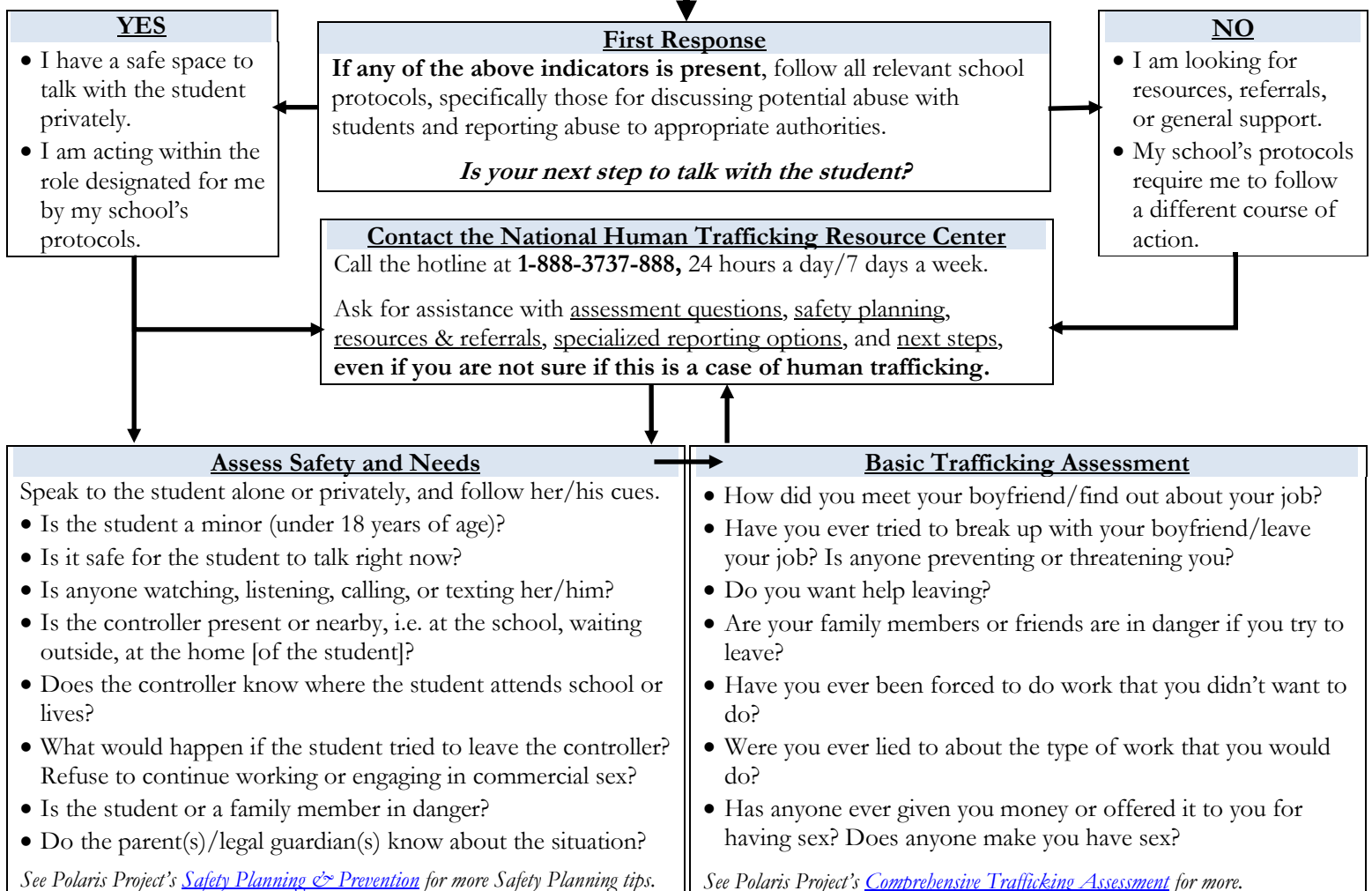
# Tools for Educators | National Human Trafficking Resource Center

This tool is designed to help educators identify the risk factors and indicators of human trafficking in their students and to offer guidelines on how to respond and access resources. **Disclaimer: This protocol does not substitute for internal or mandated reporting requirements and does not guarantee safety. For emergencies, please contact 9-1-1.**

## Red Flags & Indicators

- Exhibits changes in behaviors or school participation, i.e. spike in truancy; or performs severely under grade level.
- Student's family shows signs of frequent migration, periodic homelessness, disorientation, uncertainty of surroundings.
- History of homelessness or running away from home.
- Reveals signs of abusive or inattentive caregivers, such as untreated illness or injury, bruises, or scars.
- Displays heightened sense of duty or obligation to family, has unreasonable or inappropriate chores or duties.
- Works for little or no pay, or the employer keeps identification documents and/or confiscates wages.
- Accumulates debt to employer while at work or recruited for work with promises of easy money.
- Exhibits sexual behavior that is high risk and/or inappropriate for his/her age.
- Has an explicitly sexual online profile via internet community or social networking sites.
- Involved in relationship with an older man, receives frequent gifts, may be picked up from school by controller.
- Engages in sexual activity in exchange for money or anything of value (can include clothing, food, shelter, other goods and resources). No force, fraud, or coercion necessary if the student is under 18.
- Knowledge of the commercial sex industry. Uses lingo: "The Life," "The Game," "Daddy," for boyfriend, "Track" or "Stroll," refers to dates as "Johns" or "Tricks."

Consult Polaris Project's [Red Flags & Indicators](#) for a complete list.



This publication was made possible in part through Grant Number 90XR0012/02 from the Anti-Trafficking in Persons Division, Office of Refugee Resettlement, U.S. Department of Health and Human Services (HHS). Its contents are solely the responsibility of the authors and do not necessarily represent the official views of the Anti-Trafficking in Persons Division, Office of Refugee Resettlement, or HHS.